



Stand-Alone LAN Player Box M50B-S

Product specification

Version number: Ver.1.1

Statement

Dear user friend, thanks for choosing SHENZHEN SYSOLUTION TECHNOLOGY CO.,LTD (hereinafter referred to as Xixun Technology) as your LED advertising equipment control system. The main purpose of this document is to help you quickly understand and use the product. We strive to be precise and reliable when writing the document, and the content may be modified or changed at any time without notice.

Copyright

The copyright of this document belongs to Xixun Technology. Without the written permission of our company, no unit or individual may copy or extract the content of this article in any form.

Trademark



is a registered trademark of Xixun Technology.

Certificate

It has certificates in the below:

1. CE、ROHS、FCC、iLAC-MRA、CNAS、APPLUS、Accrtdited Laboratory、Functions Test Report;
2. The information release platform has passed the third-level filing certificate of information system security of the Ministry of Public Security
3. The material of the platform has passed the registration certificate of the license for information network transmission of audio-visual programs;
4. Get Stable and qualified product certificate through national quality inspection

If the product does not have the relevant certification of the country or region to which it is sold, please contact the relevant personnel of Hisense Technology for confirmation or treatment at the first time. Otherwise, if the relevant legal risk is caused, the customer shall bear it or Hisense Technology has the right to recover.

Update Record

No.	Version	Updates	Revision Date
1	Ver.1.0	Initial Release	2022.08.25
2	Ver.1.1	Update content	2023.02.15

The document is subject to change without prior notice.

SHENZHEN SYSOLUTION TECHNOLOGY CO., LTD

Product introduction

Xixun M50B-S supports -40°C to 85°C in high temperature, and supports network backup with gigabit dual network ports. Hardware and software design fully consider user deployment, operation, and maintenance scenarios, making deployment easier, operation more stable, and maintenance more efficient. With safe and stable functional design, save space for users, reduce wiring, can be used for advertising machine, transparent screen, mirror screen, shaped screen, door screen, shopping mall screen. Subway screen, special stage screen and other scenes with load.

M50B-S series adopts industrial-grade quad-core processor, integrates four Cortex-A35, dual-core Mali-G31 GPU, four-core master frequency 1.5GHz, can withstand 90 °C high temperature stable operation, memory support 1GB+8GB (compatible with 2GB+16GB) LPDDR3. The chip can support GSM, WCDMA, TD-SCDMA, EVDO, TDD-LTE, FDD-LTE and other systems, is a highly integrated product.

Function Characteristics

1. Double gigabit network port output, can be used as backup, to ensure the stability of picture transmission;
2. The eight-factor environmental sensor R68 can be connected externally through the 485 port to display environmental information without secondary development;
3. Support external Lora synchronization module to ensure multi-screen playback synchronization;
4. Support two remote power off, one control screen body switch, one control street lamp switch;
5. Lora wireless time calibration multi-screen synchronization;
6. Onboard WiFi module to realize wireless communication; Support AP mode, Station mode;
7. Support secondary development and remote cluster control of cloud platform;
8. Built-in Web Sever, support local web page production, support PC, mobile phone, Pad and other user terminal program release and display control, cluster remote program release and display control, cluster remote monitoring screen state;
9. Powerful processing performance, 4-core processor, main frequency 1.5GHz, support 1080P video hard decoding, 1GB running memory;
10. 8GB internal storage space;
11. When the user terminal connects to the WiFi hotspot provided by the M50B-S, the default SSID is SN and the default password is 12345678;

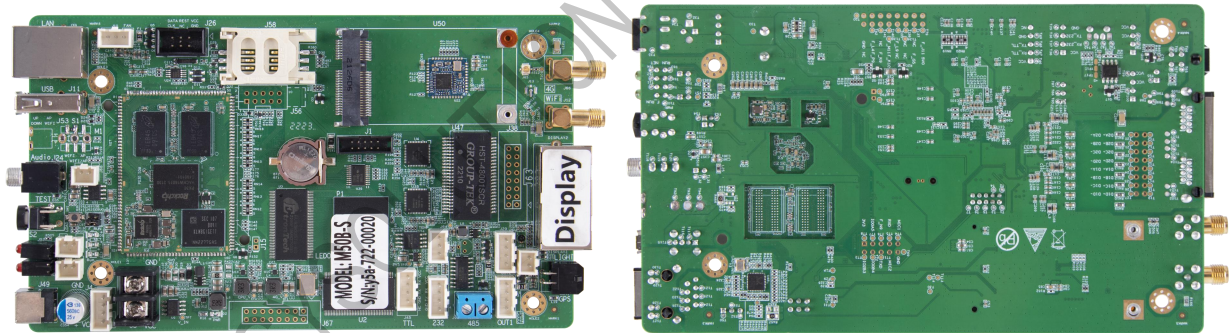
12. Support GPS positioning and timing;
13. Double network port super load capacity, resolution 1280*720;
14. Can automatically adjust the brightness of the display screen, need supporting brightness sensor;
15. Support the broadcasting of programs according to the program list;
16. The timing switch, volume and brightness can be set centrally through the management system;
17. Support USB camera;
18. Support NTP precise automatic time calibration;
19. Supporting software: PC software LedOK Express, mobile APP: LedOK Kit.

Product Appearance

M50B-S with box



M50S Naked card

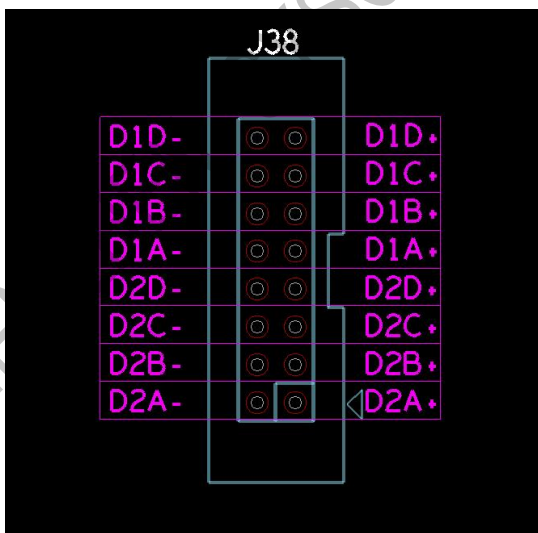


Product parameter

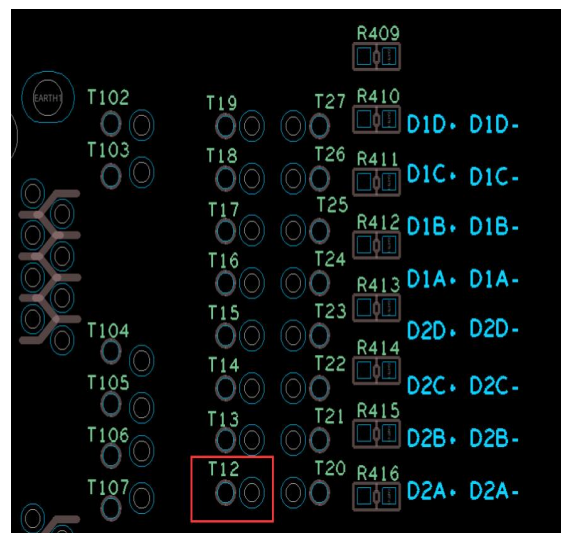
Features	Description
Type	M50S (Naked card) , M50B-S (playbox)
Pixel	M50B-S: 92 pixels, Resolution 1280 (W) *720 (H)
Communication mode	Network port、WiFi、USB
CPU	Cortex-A35 4 Core main frequency 1.5GHz
GPU	Mali-G31MP2 OpenGL ES3.2, Vulkan 1.0, OpenCL 2.0 Dvalin-2EE
System memory	8GB Emmc+1GB LPDDR3
Operating system	Android 9.0
WiFi	IEEE 802.11b/g/n 2.4G
GPS	GNSS GPS/Beidou/Glonass
Other interface support	<ol style="list-style-type: none"> 1. 1 stereo audio output. 2. 1 USB2.0 ports. 3. Support program import and play on USB disk. 4. One RS485 port, one RS232 port, and one TTL serial port. Connect the luminance sensor, other sensors, and other modules to achieve corresponding functions.
Configuration software	LedOK Express

Interface parameters/definitions

M50B-S Product Interface Label (with box)



Front



Reverse

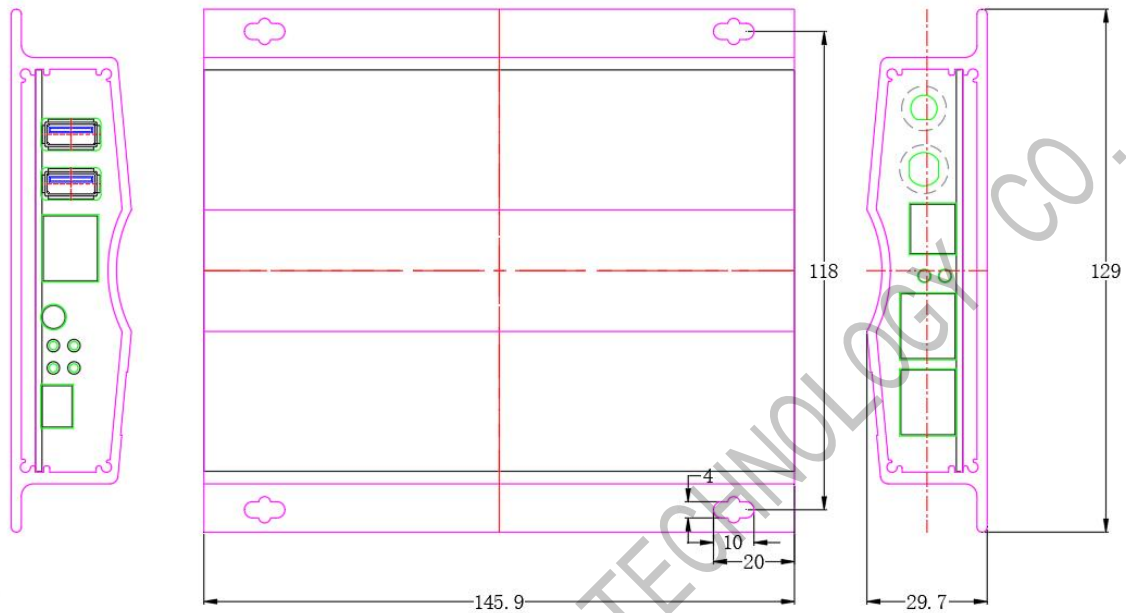
Working Condition

Working parameters	
Working voltage (V)	12V
Working current (A)	0.9A Max: 3A
Maximum working power consumption (W)	10
working temperature (°C)	- 40°C ~ +85°C
Storage temperature (°C)	-40°C ~75°C, Recommend 5°C ~35°C
Humidity of working environment (%)	10% ~ 90%, No condensation
Size (mm)	170cm×99.5cm

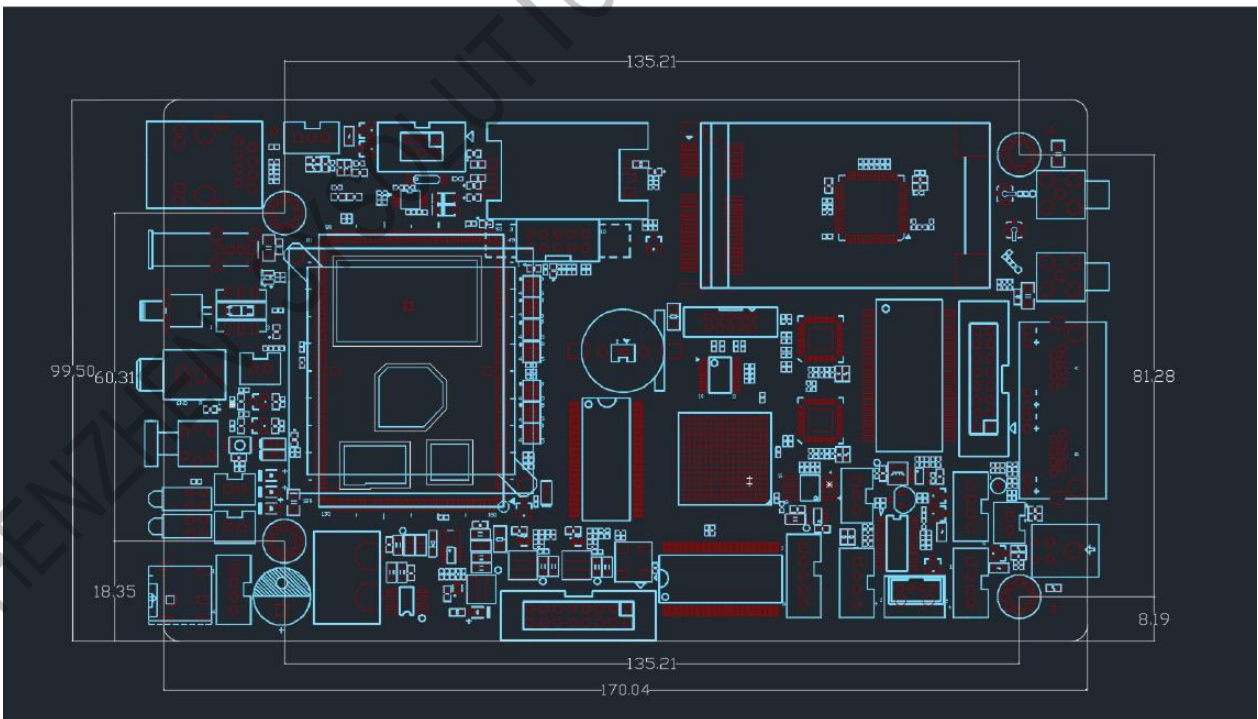
1. It is recommended to use an independent (12V/3A or above) power supply for the control card;
2. High working temperature will cause a sharp decline in power efficiency. If the control card and the module share the same power supply, please ensure that the control card has a stable voltage and a reasonable actual current supply.

Dimensional Drawing

Installation dimensions of control box M50BS



Installation dimensions of bare card M50S



Unit: mm

Accessories

Standard fittings	Quantity
Glue stick WiFi antenna	1
Optional accessories	Accessory function
Humidity line RH1	Test the humidity of the current environment
M50S with brightness line RL2	Used to sense the brightness of the current environment
M50B-S with RL3B	Used to sense the brightness of the current environment
Optional multi-function card RS5 integrated synchronization module, 5-way voltage detection, open and close door and smoke interface (optional RD1 door sensor, RM1 smoke sensor)	Picture timing synchronization, power supply detection
8-in-1 environmental sensor R68/ 6-in-1 air quality sensor R66	Temperature, humidity, illumination, PM2.5, PM10, noise, wind speed, wind direction
Electricity statistics RM1275	Real-time view of daily electricity consumption
G11 GMous Multi-mode	GPS positioning module
30W horn *2 RLB1 (need to be paired with a power amplifier RGF1)	Two remote broadcasts per screen, real-time shouts
Matching accessories (the above options, according to the order needs to place another corresponding model)	

Notes

1. It is strictly forbidden to disassemble and assemble the product by yourself.
2. It is strictly forbidden to plug and unplug the SIM card with power.
3. It is strictly forbidden to use improper voltage for power supply.
4. It is strictly forbidden to share the 200w/5v switching power supply of the screen to supply power to the card, which will lead to unstable system operation and low horn sound.

SHENZHEN SYSOLUTION TECHNOLOGY CO., LTD